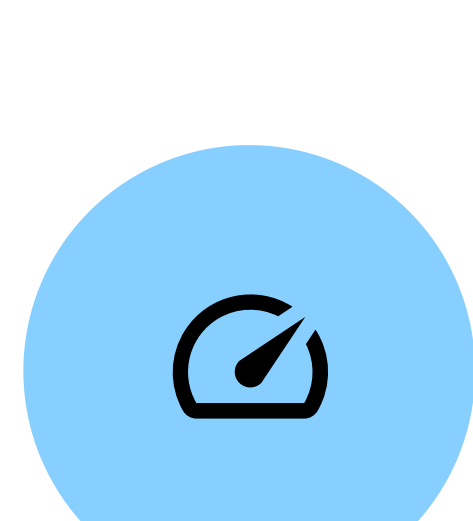


# Make resilience a reality for your SAP landscapes in Azure

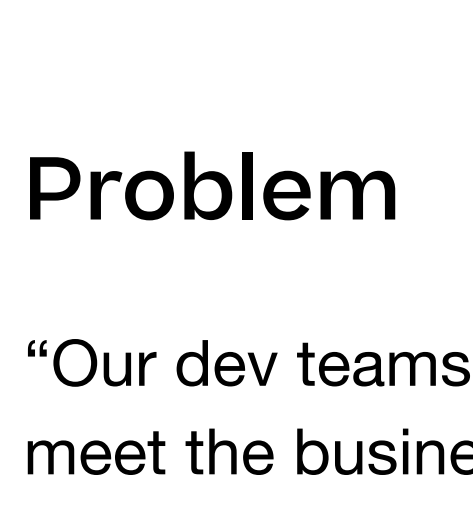
Azure NetApp Files – a native Azure service – runs your business-critical SAP workloads faster and with built-in resilience. Meet your reliability and performance targets with an enterprise file storage service that's certified for use with SAP HANA.<sup>1</sup>



## Accelerate time-to-market by deploying SAP 40% faster



87% of businesses operating in the cloud have experienced faster time-to-market.<sup>2</sup>



A McKinsey survey reported that 71% of CEOs identified improved agility and faster time-to-market as two of their top three priorities.<sup>3</sup>

### Problem

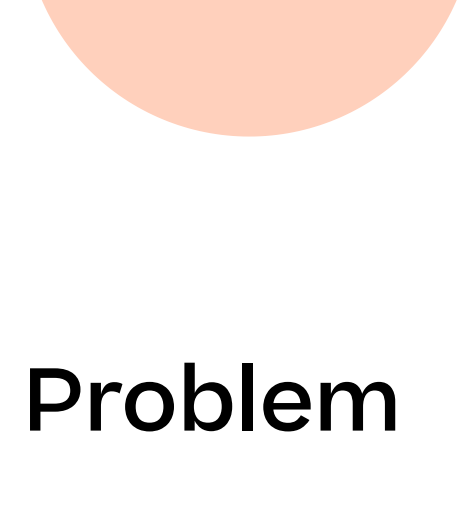
“Our dev teams are under constant pressure to meet the business needs for faster updates, changes, and new services. Often, this means moving massive data sets to access high-performance compute and storage. We need the ability to scale up and scale out environments using PIBs of data in minutes, that can then be reduced as soon as our dev/test is completed.”

### Solution

Azure NetApp Files enables rapid deployment of development and test environments through instant clones of your database using NetApp Snapshot™ copies, while integrating into important SAP workflow automations. With multiple service tiers at your fingertips, you can optimize costs without compromising performance.



## Deliver business continuity for SAP with 99.99% uptime guaranteed by Azure



45% of enterprises lose \$500K to \$5M+ for every hour of server downtime.<sup>4</sup>

### Problem

“We can't afford any application downtime. We need a reliable infrastructure along with the protections to ensure that any service disruption can recover quickly to minimize business impact.”

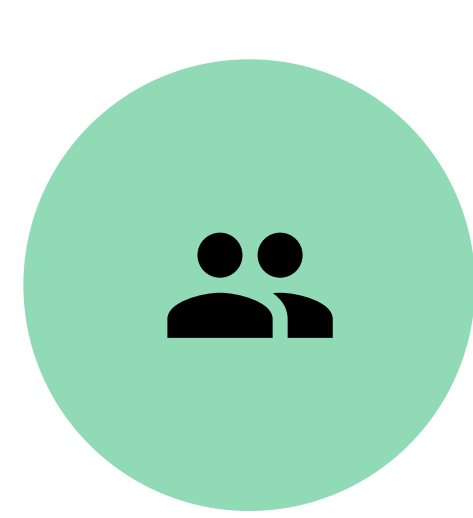
### Solution

Azure NetApp Files is a data service that supports an SAP HANA scale-out architecture so you can build a landscape in Azure that supports a standby node. Any disruption to your environment will failover within five minutes, drastically minimizing the impact of any unforeseen situation on your business operation.

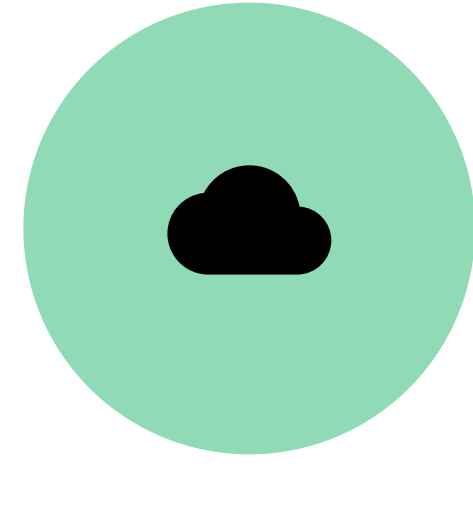
Our built-in 99.99% uptime guarantee means you do not need to hand-build additional availability environments to meet your availability targets in Azure.



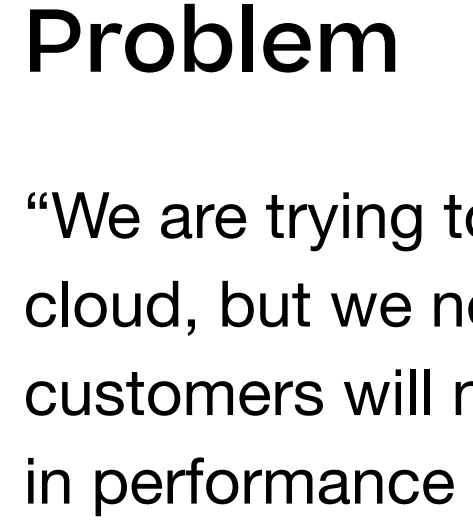
## Azure NetApp Files is the only SAP HANA-certified, independent cloud storage offering in Azure



65% of mission-critical workloads are still running on premises.<sup>5</sup>



SAP partnered with Microsoft Azure to accelerate cloud migration for SAP customers.<sup>6</sup>



According to IDC, 55% of SAP customers are in the early stages of cloud maturity.<sup>7</sup>

### Problem

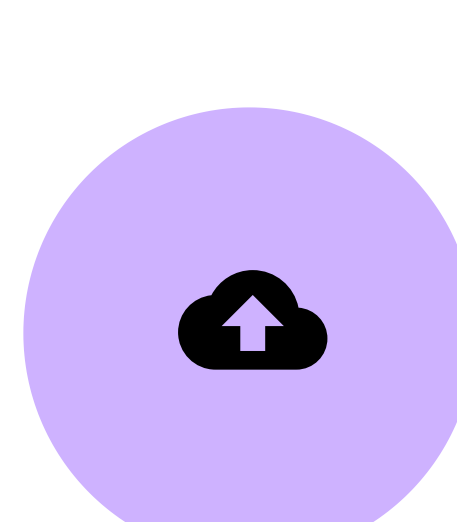
“We are trying to move more applications to the cloud, but we need assurances that SAP customers will not experience any degradation in performance when deploying in Azure.”

### Solution

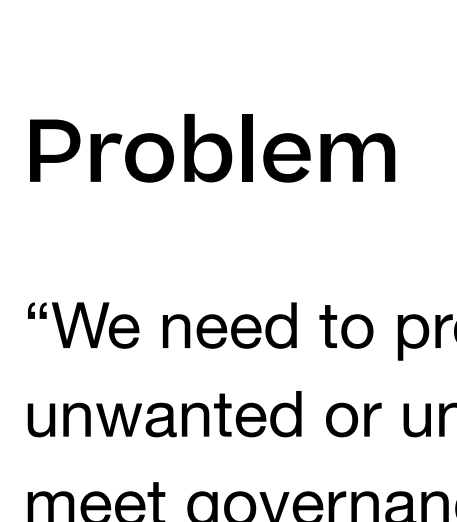
Azure NetApp Files delivers on premises or better performance with sub-millisecond latency for both HANA scale-up and scale-out workloads. Certified for use with SAP HANA production databases, Azure NetApp Files delivers <1ms latency. Dwell on that for a millisecond or two. In Azure NetApp Files, you'll be able to achieve instant file performance shared across multiple compute nodes.



## Reduce backup runtime by 99% and restore and recovery times by 70%<sup>8</sup>



58% of organizations are migrating to the cloud specifically to ensure business continuity.<sup>9</sup>



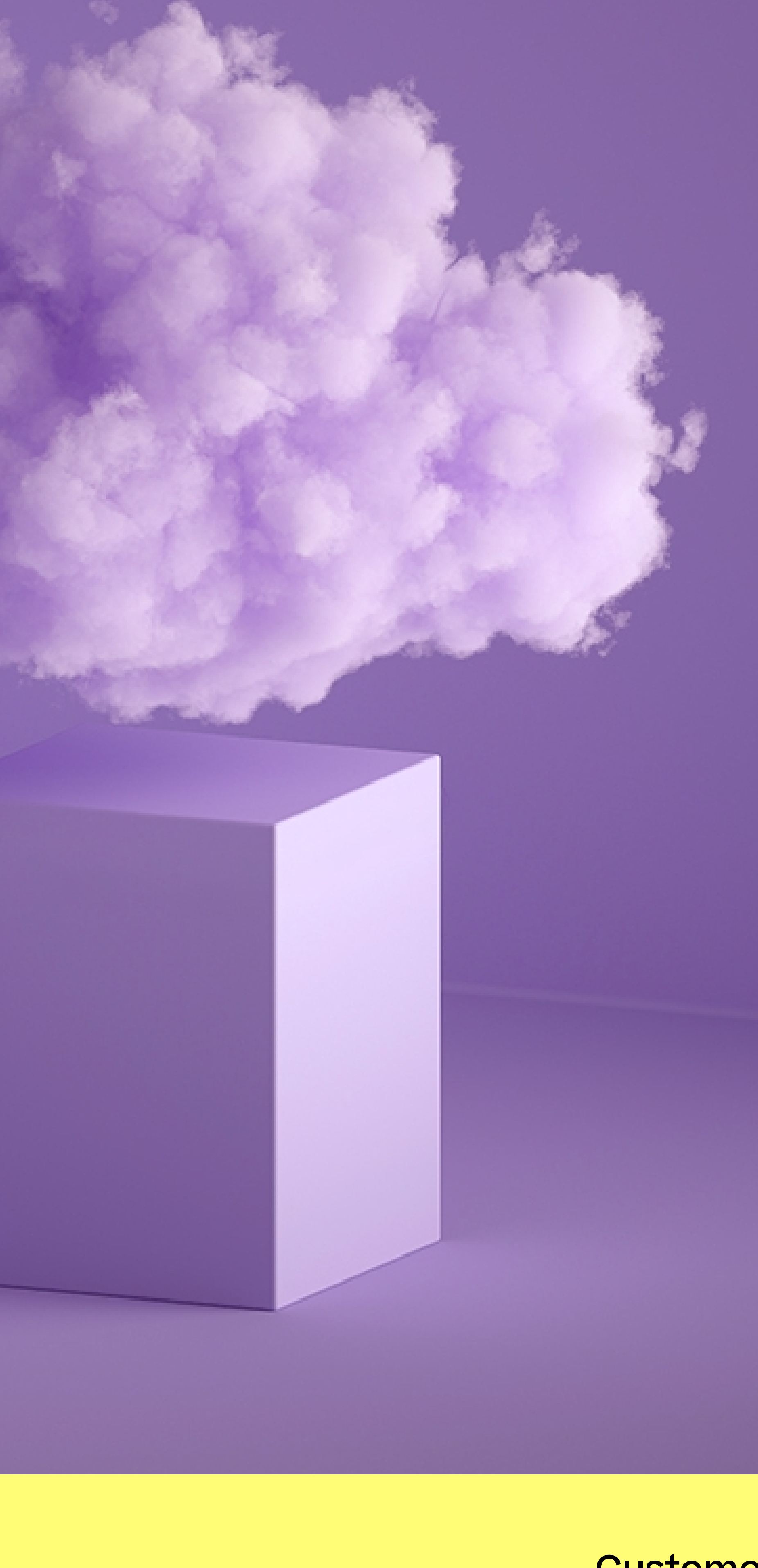
Resilient SAP environments are reducing risk by implementing technologies that can achieve backup targets in minutes, rather than hours or days.

### Problem

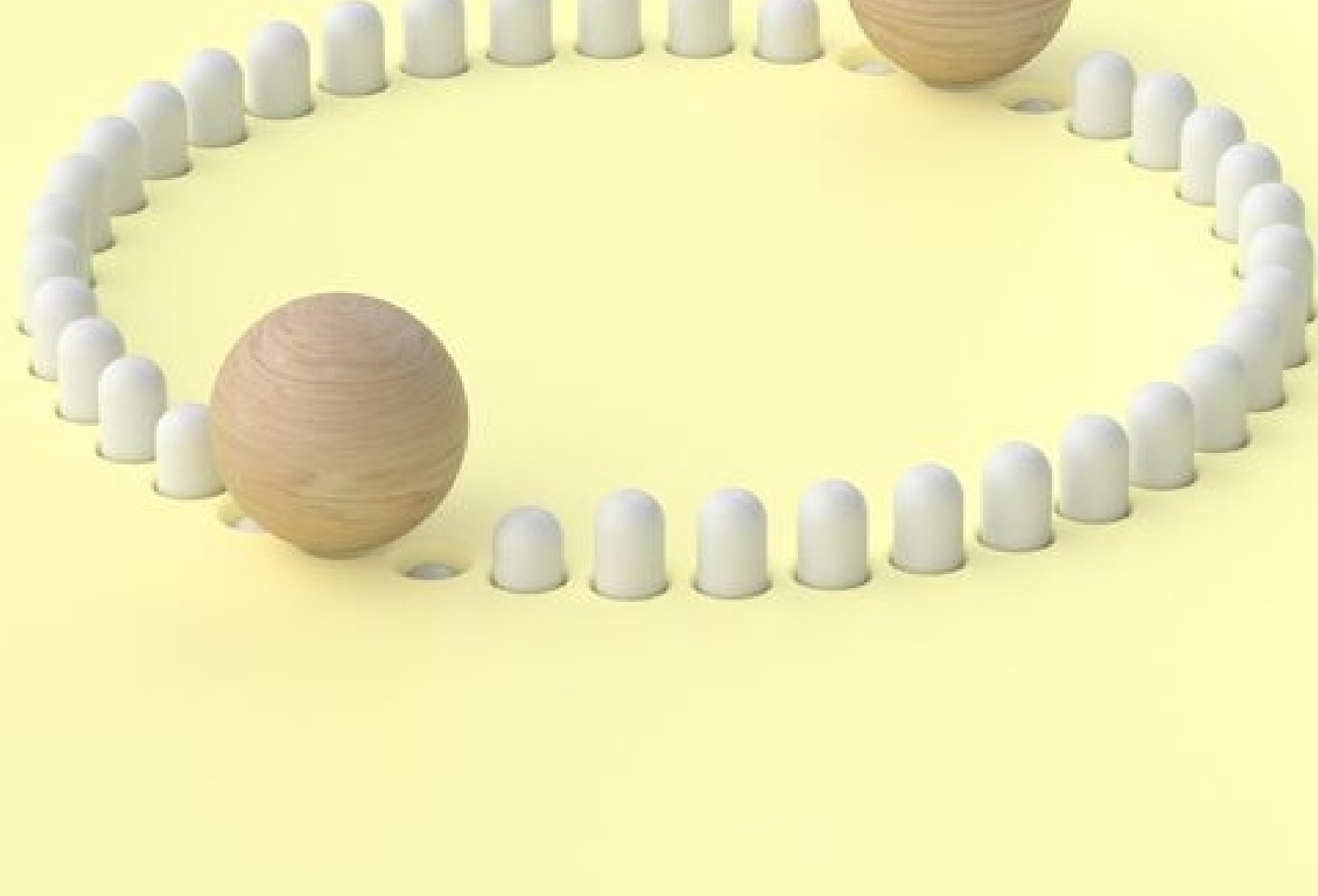
“We need to protect our environments against unwanted or unplanned data outages in order to meet governance policies for our business-critical SAP landscapes.”

### Solution

Back up a 2.3 TiB SAP HANA database in 2 minutes with Azure NetApp Files<sup>10</sup> and restore 70% faster than a file-based data backup. Snapshot copies protect data with fast, reliable backup and recovery, while improving efficiency by taking up no additional data footprint and having no impact on application performance. Not all snapshot technology is created equal; the NetApp Snapshot technology built into Azure NetApp Files delivers more stability, scalability, recoverability, and performance than most competing snapshot technologies.



## Customer success



“With ANF (Azure NetApp Files) we get scalability and flexibility, which is important for businesses to run and have a faster time-to-market for their products. With ANF we are able to deploy environments almost 30-40% faster. We are able to reduce the total number of outages by 80% because of the stability that ANF provides.”

Lalit Patil, CTO for HANA Enterprise Cloud, SAP

Watch the video [here](#).

“We chose to migrate to Azure for three main reasons: cost, strategy, and speed. As we started looking at the migration, we saw a big cost advantage with SAP HANA on Azure over the cloud we currently used. We'd gain strategic advantages from our relationship with Microsoft and the capabilities it brings – especially in analytics. And the speed was all about how quickly we'd get new capabilities in Azure and could act on them.”

David South, Director of Architecture, CONA Services

The new CONA Azure platform handles approximately 160,000 orders a day, which represents an annual \$21 billion of net sales value.

Watch the video [here](#).

## Run your SAP workloads faster in Azure than on premises

Get all the benefits of Azure NetApp Files working for you today.

Get started

<sup>1</sup> <https://azure.microsoft.com/en-us/updates/azure-netapp-files-hana-certification-and-new-region-availability/>

<sup>2</sup> <https://www.statista.com/statistics/1115793/actual-vs-expected-business-benefits-of-increased-cloud-management-worldwide/>

<sup>3</sup> <https://www.mckinsey.com/business-functions/mckinsey-digital/our-insights/unlocking-business-acceleration-in-a-hybrid-cloud-world>

<sup>4</sup> <https://www.statista.com/statistics/753938/worldwide-enterprise-server-hourly-downtime-cost/>

<sup>5</sup> <https://uptimeminstitute.com/>

<sup>6</sup> <https://news.microsoft.com/2019/10/20/sap-partners-with-microsoft-for-first-in-market-cloud-migration-offerings/>

<sup>7</sup> <https://news.sap.com/2019/05/idc-study-sap-partners-revenue-opportunity-digital-transformation/>

<sup>8</sup> NetApp performance testing benchmarks

<sup>9</sup> <https://www.statista.com/statistics/488002/enterprise-cloud-investment-drivers/>

<sup>10</sup> NetApp performance testing benchmarks